

**2024 ONE-YEAR PLAN
FOR ASPHALT & CONCRETE & ARMOR COATING**

PROJECT NO.	ROAD NO.	IMPROVEMENT	LENGTH	ESTIMATED COST	FUNDING
C89(349)C	P26-P33 BET HWY 133-P35	STABILIZER	2.0 MILES	\$28,000	COUNTY FUNDING
C89(427)B	P16 BET HWY 75-27	STABILIZER	2.0 MILES	\$28,000	COUNTY FUNDING
C89(595)B	34 BET 47 & 51	ASPHALT	2.0 MILES	\$200,000	COUNTY/PRIVATE
C89(639)	4 BET 15 & HERMAN	ASPHALT	5 MILES	\$2,000,000	COUNTY FUNDING
C89(641)	34 BET H133-37	ONYX	2.5 MILES	\$62,500	COUNTY FUNDING
C89(645)	37 BET H75-P26	STABILIZER	.50 MILES	\$7,000	COUNTY FUNDING
C89(646)	P30 BET H133-P30	STABILIZER	.50 MILES	\$7,000	COUNTY FUNDING
C89(647)	D.H. BET 29-31	STABILIZER	1.5 MILES	\$22,000	COUNTY FUNDING
C89(648)	15 BET 4-16	ONYX	5.5 MILES	\$125,000	COUNTY FUNDING
C89(665)	9 BET H91-H30	ARMOR	6.0 MILES	\$162,000	COUNTY FUNDING
C89(668)	P35 BET P33 - 32	ARMOR	3.5 MILES	\$108,000	COUNTY FUNDING
C89(685)	P30 BET H30-H133	1/2 ARMOR & 1/2 ONYX	3.0 MILES	\$78,000	COUNTY FUNDING

SUB-TOTALS: \$2,827,500.

BRIDGES & CULVERTS

PROJECT NO.	ROAD NO.	IMPROVEMENT	LENGTH	ESTIMATED COST	FUNDING
C89(533)	NEW YORK CREEK	BOX-CULVERT	0.1 MILES	\$499,523	(ARPA) COUNTY FUNDING
C89(565)	45 N/S OF ROAD 40	BOX-CULVERT	0.1 MILES	\$231,175.	(ARPA)COUNTY FUNDING
C89(599)	38 BET 15 & 19	BOX CULVERT RECONSTRUCTION	0.2 MILES	\$385,914	(ARPA)COUNTY FUNDING
C89(638)	21 @ INTER P6	BOX-CULVERT	0.1 MILES	\$268,002	(ARPA)COUNTY FUNDING
C89(644)	28 BET P17-P19	BOX CULVERT	0.1 MILES	\$300,000	(ARPA)COUNTY* FUNDING
C89(650)	6 BET WEST OF 11	CULVERT	0.1 MILES	\$45,000	(ARPA)COUNTY FUNDING
C89(651)	6 BET 9-11 (CLOSE TO 9)	CULVERT	0.1 MILES	\$45,000	(ARPA)COUNTY FUNDING
C89(652)	9 BET 6-8	CULVERT	0.1 MILES	\$75,000	(ARPA)COUNTY FUNDING
C89(653)	14 BET 5-7	CULVERT	0.1 MILES	\$75,000	(ARPA)COUNTY FUNDING
C89(654)	25 BET P4-P10	CULVERT	0.1 MILES	\$50,000	(ARPA)COUNTY FUNDING
C89(649)	22 BET 25-27	CULVERT	0.1 MILES	\$75,000	(ARPA)COUNTY FUNDING
C89(655)	32 BET 15-P17	CULVERT	0.1 MILES	\$50,000	(ARPA)COUNTY FUNDING
C89(656)	31 BET 34-36	CULVERT	0.1 MILES	\$50,000	(ARPA)COUNTY FUNDING
C89(657)	33 BET 34-36	CULVERT	0.1 MILES	\$50,000	(ARPA)COUNTY FUNDING
C89(658)	49 @ N 34	CULVERT	0.1 MILES	\$50,000	(ARPA)COUNTY FUNDING
C89(659)	9 BET 28-30	APPROACHES	0.1 MILES	\$150,000	(ARPA)COUNTY FUNDING
C89(660)	15 BET H91-20	APPROACHES	0.1 MILES	\$150,000	(ARPA)COUNTY FUNDING

ARPA FUNDING

SUB-TOTALS: \$2,549,614.

6 YEAR (2) C89(642) \$300,000

C89(643) \$300,000

TOTAL \$3,149,614.

ONE-YEAR PLAN FOR 2024

FOR GRADING & STAGE CONSTRUCTION PROJECTS

PROJECT NO.	ROAD NO.	IMPROVEMENT	LENGTH	ESTIMATED COST	FUNDING
C89(349)A	P26 & P33 BET HWY 133-P35	ENGINEERING IN PROGRESS	2.0 MILES	\$200,000	COUNTY
C89(349)B	P26 & P33 BET HWY 133-P35	STAGE CONSTRUCTION	2.0 MILES	\$200,000	COUNTY
C89(427)A	P16 BET HWY75 & 27	GRADING&STAGE CONSTRUCTION	2.0 MILES	\$200,000	COUNTY
C89(519)	51 BET P40 NORTH	GRADING & ROAD IMPROVEMENTS	1.0 MILES	\$100,000	COUNTY
C89(549)	25 BET NO & SO P10	GRADING & ROAD IMPROVEMENTS	1.0 MILES	\$100,000	COUNTY
C89(595)A	34 BET 47-51	ROAD & SHOULDER REPAIR	2.0 MILES	\$200,000	COUNTY/PRIVATE
C89(661)	38 BET H75-45	GRADING & ROAD IMPROVEMENTS	1.0 MILES	\$100,000	COUNTY
C89(662)	P37 BET P26-28	GRADING & ROAD IMPROVEMENTS	1.0 MILES	\$100,000	COUNTY
C89(663)	D.H. BET H31-19	GRADING & ROAD IMPROVEMENTS	2.0 MILES	\$200,000	COUNTY
C89(664)	P20 BET H91-21	GRADING ROAD	.75 MILES	\$75,000	COUNTY
C89(647)	D.H. BET 31 WEST ½ PAST 29	GRADING ROAD	1.5 MILES	\$150,000	COUNTY

SUB-TOTALS: \$1,625,000.

GRAND TOTALS

1. TOTALS FOR ASPHALT/CONCRETE

\$2,827,500.

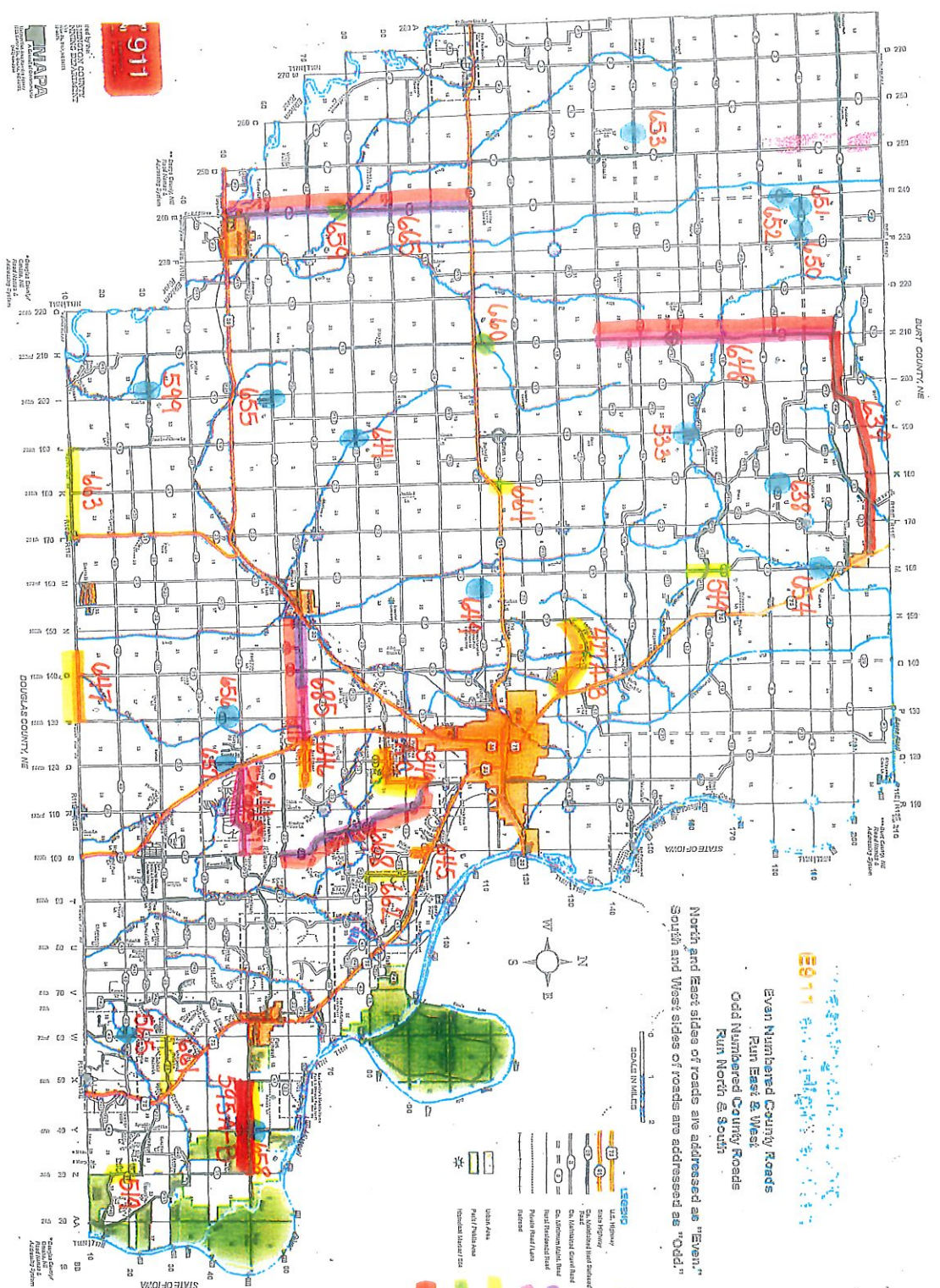
2. TOTALS FOR BRIDGES & BOX-CULVERTS

(ARPA FUNDS) \$2,549,614.

3. TOTALS FOR GRADING & STAGE CONSTRUCTION:

\$1,625,000.

GRAND TOTALS FOR ALL CATEGORIES: \$7,002,114.



911

PARTIAL
 REGIONAL CENTER
 MAP
 NAPA
 CONSULTING
 ENGINEERS
 1000 S. 10th Street
 Lincoln, NE 68502
 (402) 441-1111
 www.napacoe.com

E911
 Even Numbered County Roads
 Run East & West
 Odd Numbered County Roads
 Run North & South

North and East sides of roads are addressed as "Even."
 South and West sides of roads are addressed as "Odd."

- 2024 1yr Plan
- Bridges (Imp) Bs
- Stabilizer
- Asphalt
- Armor
- Onyx
- Grading
- Bridge Approach
- Slurry Leveling

**2024 SIX-YEAR PLAN
FOR ASPHALT & CONCRETE & ARMOR COATING**

PROJECT NO.	ROAD NO.	IMPROVEMENT	LENGTH	ESTIMATED COST	FUNDING
C89(444)B	40 BET HWY 75 & S/V	ASPHALT SURFACING	1.0 MILES	\$250,000	TWP #1 & COUNTY
C89(640)	P32 BET 39-CALHOUN	CONCRETE RESURFACE	3 MILES	\$1,000,000	COUNTY FUNDING
C89(667)	15 BET H30-D.H.	CONCRETE	6.0 MILES	\$2,000,000	COUNTY
C89(669)	P43 H75-D.H.	ARMOR	4.0 MILES	\$108,000	COUNTY

SUB-TOTALS: \$3,358,000

BRIDGES & CULVERTS

PROJECT NO.	ROAD NO.	IMPROVEMENT	LENGTH	ESTIMATED COST	FUNDING
C89(642)	21 BET 4-P19	BOX/CULVERT	0.1 MILES	\$300,000	(ARPA)COUNTY FUNDING
C89(643)	P19 BET 19-P4	BOX/CULVERT	0.1 MILE	\$300,000	(ARPA)COUNTY FUNDING
C89(682)	5 BET 6-8	CULVERT	0.1 MILE	\$100,000	COUNTY
C89(683)	8 BET 5-7	CULVERT	0.1 MILE	\$100,000	COUNTY
C89(684)	7 BET P10-12	CULVERT	0.1 MILE	\$100,000	COUNTY
C89(688)	29 BET H30-30	CULVERT	0.1 MILE	\$200,000	COUNTY

SUB-TOTALS: \$1,100,000

**SIX-YEAR PLAN FOR 2024-2030
FOR GRADING & STAGE CONSTRUCTION PROJECTS**

PROJECT NO.	ROAD NO.	IMPROVEMENT	LENGTH	ESTIMATED COST	FUNDING
C89(302)	26 BET 27 & 29	GRADING & WIDEN ROAD	1.0 MILES	\$100,000	COUNTY FUNDING
C89(345)B	34 BET CALHOUN & P34	GRADING & ROAD IMPROVEMENT	1.5 MILES	\$150,000	COUNTY FUNDING
C89(346)	28 BET 3 & 9	GRADING & ROAD IMPROVEMENT	2.5 MILES	\$250,000	COUNTY FUNDING
C89(360)	P40 BET HWY 75 & 49	GRADING & ROAD IMPROVEMENT	1.5 MILES	\$150,000	COUNTY & TWP #1
C89(441)	5 BET 28 & 30	GRADING & ROAD IMPROVEMENT	1.2 MILES	\$100,000	COUNTY FUNDING
C89(474)	26 BET 9 & 15	GRADING & ROAD IMPROVEMENTS	3.0 MILES	\$300,000	COUNTY FUNDING
C89(600)	29 BET P30 – DH.	GRADING & ROAD IMPROVEMENT	5.5 MILES	\$400,000	COUNTY FUNDING
C89(631)	P33 BET P14-10	GRADING & ROAD IMPROVEMENT	2.5 MILES	\$250,000	COUNTY FUNDING
C89(670)	26 BET 15-27	GRADING & ROAD IMPROVEMENT	6.0 MILES	\$400,000	COUNTY FUNDING
C89(671)	31 BET P30-DH	GRADING & ROAD IMPROVEMENT	5.5 MILES	\$400,000	COUNTY FUNDING
C89(672)	P15 BET 38-DH	GRADING & ROAD IMPROVEMENT	1.0 MILES	\$100,000	COUNTY FUNDING
C89(673)	P28 BET P35-37	GRADING & ROAD IMPROVEMENT	0.5 MILES	\$50,000	COUNTY FUNDING
C89(674)	3 BET H91-28	GRADING & ROAD IMPROVEMENT	3.0 MILES	\$300,000	COUNTY FUNDING
C89(675)	P1 H91-16	GRADING & ROAD IMPROVEMENT	1.0 MILES	\$100,000	COUNTY FUNDING
C89(676)	16 BET 3-7	GRADING & ROAD IMPROVEMENT	2.0 MILES	\$200,000	COUNTY FUNDING
C89(677)	8 BET C.L-5	GRADING & ROAD IMPROVEMENT	2.0 MILES	\$200,000	COUNTY FUNDING
C89(678)	13 BET P8-P10	GRADING & ROAD IMPROVEMENT	1.0 MILES	\$100,000	COUNTY FUNDING
C89(679)	P9 BET BURT-4	GRADING & ROAD IMPROVEMENT	1.0 MILES	\$100,000	COUNTY FUNDING
C89(680)	11 BET BURT-4	GRADING & ROAD IMPROVEMENT	1.0 MILES	\$100,000	COUNTY FUNDING
C89(681)	P21 BET HSR-P6	GRADING & ROAD IMPROVEMENT	2.0 MILES	\$200,000	COUNTY FUNDING
C89(686)	P10 WEST 23	GRADING & ROAD IMPROVEMENT	0.1 MILES	\$50,000	COUNTY FUNDING
C89(687)	P10 BET P21-23	GRADING & ROAD IMPROVEMENT	0.1 MILES	\$50,000	COUNTY FUNDING

SUB-TOTALS: \$4,050,000.00

GRAND TOTALS

1. TOTALS FOR ASPHALT/CONCRETE

\$3,358,000

2. TOTALS FOR BRIDGES & BOX-CULVERTS

\$1,100,000

3. TOTALS FOR GRADING & STAGE CONSTRUCTION:

\$4,050,000

GRAND TOTALS FOR ALL CATEGORIES: \$8,508,000.

